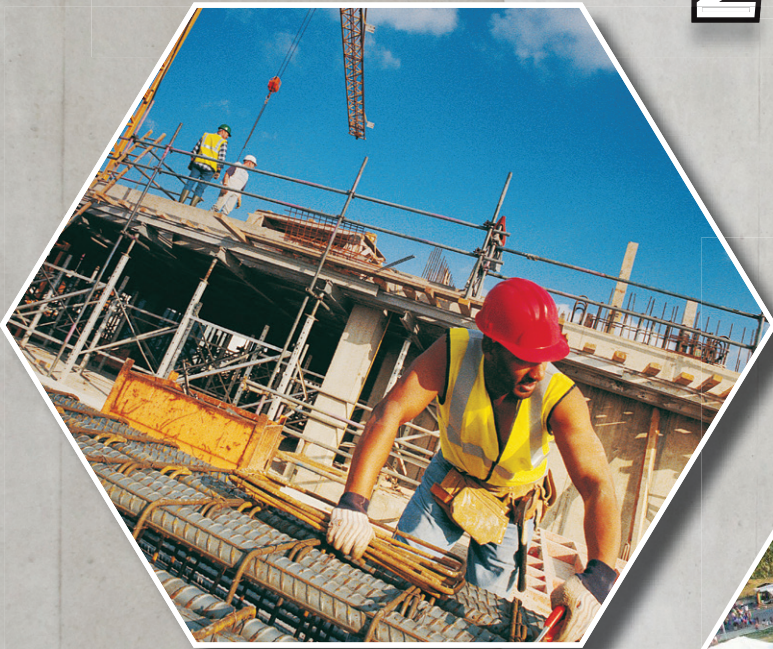


PROFILES OF **PROGRESS** 2018



A supplement of the
St. Joseph News-Press

One of America's best. Close to home.

MOSAIC
LIFE-CARE



healthgrades.

AMERICA'S
50 Best
HOSPITALS™

★ ★ ★ ★ ★

2018

In the top 1% in the nation.

We're proud to announce that Mosaic Life Care has been named one of America's 50 Best Hospitals™ putting us among the top 1% in the nation for overall clinical excellence by Healthgrades® in 2018.

When you need family, urgent or specialty care, Mosaic Life Care offers world-class health care with hometown convenience.

Learn more at myMosaicLifeCare.org/Top50

MOSAIC™
LIFE-CARE

75099636

Profiles of Progress is an annual publication of the **St. Joseph News-Press** offering advertising the opportunity to describe their buisness and tell customers and potential customers about their products and services.

Commerce.....	4
Community.....	12
Health.....	16
Industry and Agriculture	18

ADVERTISERS

	Profile, Ad
Alexander’s Blind & Drapery Shop	5, 7
Altec	21, 25
American Red Cross	13, 13
Archer Lawn Care	5, 9
Battery Man.....	6, 26
CBIZ	6, 6
Commerce Bank.....	10
Creviston & Son Jewelry.....	7, 5
Dave’s Diesel.....	21, 25
Heartland Trailways.....	8, 7
Hillyard Technical Center	13, 15
I&M	22, 19
International Paper	22, 27
Jamesport Builders.....	23, 26
Johnson Controls	23, 23
Keller Construction.....	23, 21
Ken Smith Autobody, Inc.	8, 6

Lifeline Foods.....	24, 22
Matheson Gas.....	24, 21
Mosaic Life Care	17, 2
Nestle Purina	14, 11
Nodaway Valley Bank	8
Northwest Health Services.....	17, 28
Old Cookstove	9, 9
Postal & Comunity Credit Union.....	9, 7
RJ Lumber	26
Roderick Sign.....	10, 9
Rolling Hills Library	14, 13
Rupp Funeral Home	14, 14
Seaman ad Schuske	25, 22
Snyder & Associates	25, 24
St. Joe Boot.....	10, 6
St. Joseph Public Library.....	16, 13
Triumph Foods	26, 20
Van Cleave Construction	26, 21

ON THE COVER: Construction has been active throughout Downtown St. Joseph (top left photo); fans cheer on the Kansas City Chiefs on during training camp practice at Missouri Western State University (Bottom left); and pictures from a drone as it flies over Trails West! (Center Right).

New spaces offer homes for entrepreneurs

By NEWS-PRESS NOW

Two local developments — one already open and another in the works — aim to offer space for flourishing entrepreneurs in St. Joseph.

CoJoe is a co-working space located Downtown at 518 Felix St. A grand opening was held at the facility at the end of January.

The space is designed to be shared by entrepreneurs, freelancers, startups and remote workers who understand the value of community and collaboration. CoJoe occupies the entire first floor of the four-story building.

“To have a growing local economy you must have vibrant entrepreneurial culture,” said Patt Lilly, president and chief executive officer at the St. Joseph Chamber of Commerce. “The co-working space provides the environment and connectivity to support and grow entrepreneurs in St. Joseph.”

The chamber spearheaded the CoJoe endeavor with support from local entrepreneurs, small business owners and officials from Missouri Western State University’s Craig School of Business and the city of St. Joseph.

In 2014, the Census Bureau named St. Joseph fifth in the nation for startups, said Kristie Arthur, director of workforce development for the chamber.

“We’ve been researching ways to bring a co-working space to St. Joseph ever since and are happy that it’s about to open,” Arthur said.

Members of CoJoe pay a monthly membership fee of \$95 a month to have access to a work space, Wi-Fi, coffee, kitchen, conference room, high-speed internet and a copy machine.

“Opening a co-working space allows entrepreneurs to gather, to have a little time away,” Arthur said. “But if they really just need some quiet time, they can have that as well. CoJoe will provide a culture where entrepreneurs can get to know other entrepreneurs and bounce ideas off of each other.”

One-day passes are available. Arthur said, for those traveling, CoJoe is a good place to come between meetings or rent a conference room.

Renovations at the East Hills Shopping Center could offer another first step for entrepreneurs.

Work has begun on The River, a project to create about 10 new spaces for part-time tenants at the mall.

The approximately 30,000-square-foot space is located on the corner near the carousel and Gordmans. Topsy’s was located in the spot but has temporarily moved to another storefront next to Kay Jewelry and Pink. Once the project is completed at the end of the summer, Topsy’s will move back into the renovated space permanently. A full-time coffee shop also is going to be a permanent part of the new area.

The River will have a modern feel with lots of glass and stone. Tenants will rent individual spaces on a short-term lease. They can rent for as little as a week or as long as a month or a year, at a discount.

“This is good for seasonal stores,” said Miu Sutton, marketing director at the mall. “You don’t have to commit for a long-term lease for two or three years.”

Sutton said the concept is a great way for entrepreneurs to test their products and even their business plan.

“It’s a great way for young professionals to get their feet wet without costing them a whole lot,” she said.

East Hills is calling the project a pop-up retail space. The shops, while small and temporary, are used by companies to build interest in their product or service.

“Customers are attracted to exclusivity,” Sutton said in a release. “They’re attracted to a ‘here today, gone tomorrow’ type of concept.”

One of the initial challenges facing any entrepreneur is finances, especially with a storefront. The River might fill that gap.

“It absolutely will be great for who I work with,” said Annette Weeks, director of the Center for Entrepreneurship at Missouri Western State University. “This gives them the opportunity to start with low overhead but be able to reach potential clients. And then they can test the market and as they see success they can grow into larger space with larger overhead.”



Jessica Stewart | News-Press Now

CoJoe is opening at 518 Felix St. The co-working space will be shared by entrepreneurs, freelancers, startups and remote workers.



Jessica Stewart | News-Press Now

Kee Farnan, left, and Matt Buchman of E.L. Crawford Construction work on a new project at the East Hills Shopping Center.

Alexander's Blind and Drapery Shop

www.alexandersbnd.com

Address: 2207 N. Belt Highway, Suite H, St. Joseph, MO 64506

Phone: (816) 232-4877

Business hours: 9 a.m. to 5:30 p.m. Monday through Friday; 10 a.m. to 3 p.m. Saturday

Year established: 1985

For over 30 years, Alexander's Blind and Drapery Shop has served the community with its knowledge of draperies, blinds, shades, shutters and more.

With free, no-obligation appointments in your home, office or business, the qualified decorating consultant can help you choose products, styles and colors to reflect your personal tastes to fit within your budget.

Alexander's Blind and Drapery Shop guarantees quality installa-

tion from experienced fabricators and installers to ensure complete satisfaction with function and operation of all products.

If you need any repairs to your blinds, shades or draperies, bring them in and the staff will repair them for a minimum \$15 repair fee.

Come by our showroom in the Anderson Ford Plaza and view our large selection of fabrics and samples. We are an authorized dealer of Hunter Douglas, Lafayette Venetian Blind and Draper Screen Shades.

ALEXANDER'S
Blind and Drapery Shop

Archer Lawn Care, Inc.

www.archerlawncare.com

Address: 5201 N.E. Woodbine Road, St. Joseph, MO 64505

Phone: (816) 279-7200

Business hours: 8 a.m. to 5 p.m. Monday through Friday

E-mail: service@archerlawncare.com

Year established: 1999

Number of employees: 25

Twitter: @archerlawncare

Facebook: facebook.com/alcinc

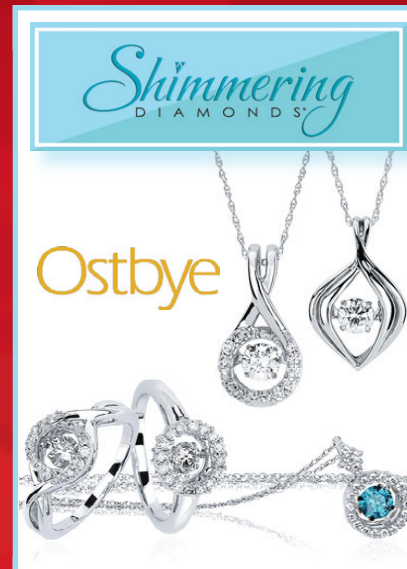
Archer Lawn Care, Inc. is based on the principles of providing a complete and quality solution to all of your maintenance, landscaping and snow and ice management needs at an affordable price. With this philosophy, we have grown at a steady pace while still maintaining those values. We service both residential and commercial accounts, including everything from single-family homes, apartment complexes and condo communi-



ties to commercial businesses, shopping centers and industrial complexes.

We are locally owned and operated and service all of the surrounding communities with an experienced and knowledgeable Landscape Industry. Our certified staff is equipped to maintain your property on a priority basis, from the smallest to the largest details.

Over a Century of Timeless Beauty & Elegance



CREVISTON
AND SON JEWELRY

SINCE 1908
Over a Century of Trust

510 N. Belt • St. Joseph • 816-233-7990
www.crevistons.com

TOP DOLLAR PAID FOR SCRAP GOLD SELL YOUR GOLD, COINS, JEWELRY, ETC. FOR CASH!
WATCH BATTERIES INSTALLED WHILE YOU WAIT (ALL MAKES AND STYLES) • JEWELRY REPAIR: WATCHES, RINGS, BRACELETS, ETC.

Battery Man Supply Inc.

Address: 1729 Commercial St., St. Joseph, MO 64503

Phone: (816) 279-2172

E-mail: Batterymansupply@gmail.com

Business hours: 8:30 a.m. to 5 p.m. Monday through Friday; 8:30 a.m. to noon Saturday; emergency service available 24/7

Year established: 1929

Number of employees: 3

Battery Man Supply Inc., a family-owned-and-operated company for more than 85 years, offers au-

tomotive electrical supply and repairs, including batteries, starters and alternator sales and repair.

Their services range from automotive to agricultural, industrial, marine, motorcycle and even include ATV, UTV, etc.

Battery Man Supply Inc. also carries new exchange units.

You can expect same-day service and installation service on site.

Everything "STARTS" here!

CBIZ Insurance Services, Inc.

www.cbiz.com

Address: 218 South 7th St., St. Joseph, MO 64501

Additional locations: 700 West 47th Street, Suite 1100, Kansas City, MO 64112

Phone: (816) 233-0201

Business hours: 8 a.m. to 4:30 p.m. Monday through Friday

Year established: 1899

Number of employees: 9

CBIZ Insurance Services, Inc. is one of the country's largest publicly owned property and casualty insurance brokers and a top broker of business in the U.S. Our position enables us to foster strong relationships with highly rated insurance companies to offer the best products and highest value to our customers.

Our local practice focuses on linking personal service with exceptional resources. Our clients benefit from a unified professional

services team providing best in class property and casualty brokerage and employee benefits consulting services.

Our St. Joseph office works with small and large commercial clients, servicing businesses in a variety of industries. We have a dedicated business unit that works exclusively with small businesses, as well as agents who focus on larger operations and governmental entities. While we are able to apply our expertise to any industry, we have developed specialized practices for physician groups and other health care operations, public entities, law firms, and construction and manufacturing companies.

Contact us for more information on how we can help protect you, your business and your personal assets.



The Battery Man

ST. JOE BOOT CO.

YOUR WORK BOOT HEADQUARTERS
17,000 PAIR OF BOOTS IN STOCK - ALL AT DISCOUNTED PRICES

Hours: Mon.-Sat. 9-7 / Sun. 12-5
 Belt & 36 Hwys. St. Joseph, MO 816-232-8128 • 888-295-9168

PROPERTY & CASUALTY | EMPLOYEE BENEFITS | EXECUTIVE RECRUITING
 PAYROLL & HR SERVICES | ACCOUNTING, TAX & ADVISORY

Multiple Services
 with a Single Focus:
**YOUR
 SUCCESS**

CBIZ 218 South 7th Street
 Saint Joseph, MO 64501
 816.233.0201
www.cbiz.com

*Where Pride of Workmanship
 Comes First*

Ken Smith Autobody, Inc.

1611 Frederick Ave., Saint Joseph, Mo.
 816-279-6406

www.facebook.com/KenSmithAutoBody

2017 READERS' CHOICE
 2017 READERS' CHOICE

Good Housekeeping
 ASE
 I-CAR ADVANTAGE
 PPG CERTIFIED
 BBB
 Certified First

Mike, Mary, Chris & Kevin Brown, Owners

Creviston and Son Jewelry

www.crevistons.com

Address: 510 N. Belt Highway,
St. Joseph, MO 64506

Phone: (816) 233-7990

Business Hours: 9 a.m. to 5:30 p.m.
Monday through Friday; 9 a.m. to
3 p.m. Saturday

Year established: 1908

Creviston and Son Jewelry is celebrating 110 years in business. St. Joseph's oldest Jewelry business is proud to be family-owned. Founded by Jeff T. Creviston Sr. in 1908, Creviston and Son evolved from a wholesale and manufacturing business to the retail jewelry business it is today.

For the past 20 years, Creviston and Son has been St. Joseph's favorite jewelry store through the News-Press Reader's Choice Awards. We have received the Gold, Platinum and Diamond awards, the highest possible. The staff at Creviston and Son believes these awards result from customer appreciation for the selection of quality diamond and colored stone jewelry and time-pieces. Of course, Creviston and Son's outstanding customer service is another reason customers return for all their Jewelry needs.

At Creviston and Son Jewelry you will find the perfect Engagement Set. With our wide selection of Ostbye, Valina, Rego Bridal Collections you are sure to find something she will love. Exclu-

sive at Creviston and Son Jewelry is the new Valina Bridal Collection, the Trend Collection for Modern Bride.

As always, Creviston and Son is also a great source of estate and consignment jewelry of all kinds. Plus, Creviston and Son offers top dollar for gold for more information about Creviston and Son Jewelry, contact Tim Creviston or Craig Obermier and remember to visit www.crevistons.com



**Celebrating our 90th year
of providing great financial
services to the residents of
Northwest Missouri and
Northeast Kansas.**



**Postal & Community
CREDIT UNION**

Now You Too Can Belong!
(816) 279-5656

Call us today to see how easy it is to
become a member.

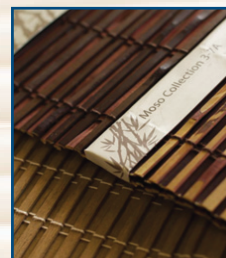
www.yourpccu.org



75099883

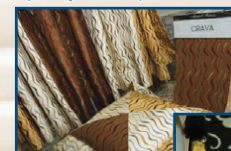
ALEXANDER'S *Custom drapes
and blinds*

Blind and Drapery Shop



**HunterDouglas
Dealer**

Free
in-home
estimates



(816) 232-4877 for appointment • 2207 N. Belt, St. Joseph, MO

YOUR ONE STOP TRANSPORTATION PROVIDER



Serving Northwest Missouri for 30 years. We
provide ground transportation for groups of any
size, anywhere in North America.



**Fun & Unique
Wedding Transportation**

"PREMIER TRANSPORTATION".

Premier Transportation, a division of HMC, offers
Airport, Wedding and Special Event transportation
using its fleet of specialty vehicles.



Call Today 816-279-7800
www.heartlandtrailways.com

75099781

Heartland Trailways

www.heartlandtrailways.com

Phone: (816) 279-7800

Heartland Trailways is one of the most referred coach companies in the K.C./St Joseph region with 28 years of history and over 75 years of transportation experience of its management team, Heartland Trailways, continues to keep safety as the No. 1 priority and thrive on customer service.

Our luxury coach fleet consists of 56, 50, 39 and 28-passenger coaches. All of the coaches are equipped with luggage space, overhead storage, TV monitors, DVD/CD player, PA system, WiFi,



and electrical outlets. Our executive



coach fleet consists of 56-passenger coaches, equipped with the amenities of our luxury coaches, but with leather seating, and DIRECTV service.

Heartland's roots in NW Missouri date back to 1988, when Chuck Hill founded the company with two coaches in Maryville. Outgrowing the Maryville location, the company moved in 1997 to its present location in St. Joseph, where it has become an integral part of the community.

Since 2016, Heartland Trailways also provides limo and executive transportation throughout St. Joseph and northwest Missouri. Call us at 816-279-2946 to book your upcoming prom and wedding ride!

Ken Smith Autobody, Inc.

Address: 1611 Frederick Ave., St. Joseph, MO 64501

Phone: (816) 279-6406

E-mail: KenSmithAutobody@aol.com

Business hours: 8 a.m. to 5 p.m. Mon.-Fri.

Year established: 1958

Number of employees: 15

Ken Smith Autobody, first opened in 1958 by Ken Smith, has always been at the same location. Purchased by Mike and Mary Brown in 1986, the shop provides quality auto body repair and painting of all makes and models. They have also done several custom motorcycles.

The Brown's sons, Chris and Kevin, have become part owners to continue the family-owned business.

"Our customers choose our shop for many reasons – honest, friendly customer

service, up-to-date equipment and ongoing training for employees," Mike Brown said. "We live up to our motto: "Where Pride of Workmanship Comes First."

Ken Smith Autobody's employees are certified technicians who genuinely take pride in restoring the customer's vehicle back to pre-accident condition. The shop has recently received certification for aluminum welding.

Ken Smith Autobody's has received the News-Press Reader's Choice award 17 years in a row and is a charter member of the Certifies First network program.

**Ken Smith
Autobody, Inc.**



New look.

New possibilities.

Nodaway Valley Bank

Celebrating 150 years

Member
FDIC

The Old Cookstove

Address: 119 S.E. Rosa Road, Maysville, MO 64469

Business hours: 7 a.m. to 5 p.m. Tuesday through Friday; 8:30 a.m. to 2 p.m. Saturday.

Phone: (816) 449-2285

Year established: 2007

Number of employees: 3

The Old Cookstove is a unique country store. Homemade breads, pies, rolls and cookies are made on site and are available fresh daily. Along with a large variety of baked goods, The Old Cookstove welcomes special orders and whole-



THE Old Cookstove

sale orders. It now offers a variety of essential oils.

The Old Cookstove also carries a wide variety of bulk foods, snacks and candies. Homestyle jams, jellies, pickles and relishes are available as well.

Javataza coffee is served at The Old Cookstove. Javataza is grown in the sun-rich mountains of Costa Rica. The Old Cookstove offers a full line of coffee drinks. A large variety of deli meats and cheeses is another popular feature.

"Our lunch menu consists of soups and deli sandwiches," says owner Wanda Sommers. "In the morning, we offer delicious pastries and breakfast burritos."

Postal & Community Credit Union

www.yourpccu.org

Address: 3921 Oakland Avenue, St. Joseph, MO 64506

Additional locations: 5325 Faraon Street, St. Joseph, MO; 402 S. Highway 71, Savannah, Missouri

Phone: (816) 279-5656

E-mail: greatservice@yourpccu.org

Business hours: 9 a.m. to 4:30 p.m., Monday through Thursday; 9 a.m. to 5:30 p.m. Friday; 9 a.m. to 12 p.m. Saturday (drive-up facility)

Year established: 1928

Number of employees: 16

Postal & Community Credit Union provides financial services to people who work or reside in Buchanan and Andrew counties in Missouri, and Doniphan, Atchison and Leavenworth counties in Kansas.

PCCU offers a full range of finan-



Postal & Community CREDIT UNION

cial services, including auto loans, home equity loans, mortgage loans, savings accounts, kids' savings, teen savings, platinum club savings, checking accounts, money market accounts, certificates of deposit and IRAs. Our credit union offers many conveniences, including internet account access, debit cards, mobile deposits, ATMs, drive-up facilities and our web site.

Since our credit union is not-for-profit, we focus on excellent service. Our credit union offers lower loan rates, higher savings rates and lower fees to help people save money. Our goal is to provide members with great rates and great service. Join today!

87 Years of Quality Service

Roderick SIGN CO.

1621 Frederick Ave. • St. Joseph, MO • 816-232-7005
www.rodericksigns.com

WE OFFER THE BEST:

- Custom Design
- Installation
- Manufacturing
- Maintenance

THE Old Cookstove

Bakery - Deli - Bulk Foods
Homestyle Jams, Jellies,
Pickles & Relishes
Candies - Specialty Coffee

119 Rosa Road • Maysville, MO
Hours: Tue-Fri 7:00am-5pm
Sat 8:30am-2pm, Closed Sun & Mon
816-449-2285

Maintenance & Landscaping

ARCHER LAWN CARE

Commercial & Residential

LAWN CARE PROGRAMS **LANDSCAPE DESIGN & BUILD** **LAWN MAINTENANCE** **SPRINKLER & IRRIGATION** **LANDSCAPE MAINTENANCE**

Call us today! **816-279-7200** www.archerlawn care.com
5201 NE Woodbine Rd. Saint Joseph, MO 64505

Roderick Signs

Address: 1621 Frederick Ave,
St. Joseph, MO 64501
Phone: (816) 232-7005
Business hours: 8 a.m. to 5 p.m.
Monday through Friday
Year established: 1931



Roderick Sign Co. was established in 1931 by Jim Roderick. Three generations and 87 years later, we are still supplying sign services for St. Joseph residents and those in the surrounding areas.

Our signs are made for places including casinos, hospitals, churches, department stores and international business franchises such as

restaurants, gas stations and retail outlet stores. We also have service trucks for any sign maintenance you may need.

Our capabilities include neon and digitally printed signs, illuminated, LED-illuminated and non-illuminated signs, letters, logos, awnings and banners, as well as message centers, marquee signs and much more. There is no job too big or too small.



St. Joe Boot Co.

www.stjoebootco.com
Address: 3749 Pacific St., St. Joseph,
MO 64507
Business hours: 9 a.m. to 7 p.m. Monday through Saturday; noon to 5 p.m. Sunday
Phone: (816) 232-8128
E-mail: stjoebootco@yahoo.com
Year established: 1976
Number of employees: 19

St. Joe Boot Co., the only locally-owned western wear store in the area, has been supplying St. Joseph with everything from work boots to dress boots for over 40 years. With more than 17,000 pairs of boots in stock at the guaranteed lowest prices, we offer some-

thing for everyone in your family. Brands include Double H, Ariat, Wolverine, Corral, Durango and more.

St. Joe Boot is your work boot headquarters with over 150 styles of safety toe boots in stock, including lace-ups and pull-ons, as well as a huge selection of soft toe lace-ups and pull-ons!

St. Joe Boot Co. also carries the latest styles of western wear at discounted prices, and we have the only shoe repair shop in town. Our friendly, knowledgeable staff is ready to assist you!

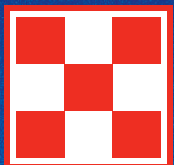


We love how
our community
rises to the
challenge.

Helping you and our community grow is the reason we love coming to work every day. Call, click or stop by and let us help you meet life's everyday challenges.



commercebank.com



Nestlé PURINA



**Officer Kenny Smith &
Topper**

PROUDLY
SUPPORTING
THE ST. JOSEPH
POLICE K-9
UNIT



AND HARDWORKING ANIMAL
PARTNERS EVERYWHERE

**4502 Packers Ave., St. Joseph, MO
816-238-0681 • www.purina.com**

Projects nearing completion will benefit community

By NEWS-PRESS NOW

Developments throughout St. Joseph are leading to improvements for the community.

With Mosaic Life Care moving more than 200 of its employees into the German-American Bank building in 2017, the Downtown area has seen advances. The hospital purchased the historic building more than three years ago and completed a \$20 million renovation project there.

Local businesses such as coffee roastery Mokaska and French cafe Brioché reported increases in sales after the move, and the need for parking for Mosaic employees sparked other investments Downtown.

The most obvious change to the area's skyline is the construction of a \$16.7 million retail structure at Eighth and Felix streets that will serve as a parking garage with ground-floor businesses.

The parking garage portion of the structure offers roughly 290 spots, which will be available to the public after business hours. More than 20,000 square feet of retail space is included for businesses interested in opening Downtown.

Construction on that project is nearing completion, with some parking spaces already available for use. Now St. Joseph residents are being asked their opinion about what types of businesses should go in the new retail complex. People can take the Felix Street Market 2018 survey during the month of March at www.research.net/r/FelixStreetMarketSurvey2018.

Elsewhere in the city, construction on two new fire stations continues, with work slated to be finished later in 2018. Stations 9 and 11 are being replaced with bigger and more workable buildings.

City Engineer Roger Sparks said one station will have two bays and the other will have three, whereas the buildings they are in now only have one. "The trucks barely fit," Sparks said. "In fact, they have to fold in their mirrors every time they back in."

He said access will be easier and accommodations will be better. The new stations also will have modern kitchens, bunk rooms and living spaces.

"Overall, it'll be a much better station than the ones they're in today."

The new Station 9 is being built at 32nd and Faraon streets, and Station 11 is relocating to a spot on 22nd Street near Highway 36.

Sparks said they chose these areas for a reason.

"What it'll do is, it'll help extend the coverage a little bit to the east, which is where the direction of the city has been growing," Sparks said. "It'll help response times for quite a bit of areas within the city."

The cost for both fire stations together is \$5,099,500.

Improvements also are set for one of the city's larger parks.

The play structure at Bartlett Park has been completely torn down after years of having one damaged piece at a time removed. The St. Joseph City Council recently approved an emergency ordinance to accept a \$480,000 contract with Playcore Wisconsin Inc. in order to start work on a new playground now so that it can be ready for use in the late spring or early summer.

The project is using a matching grant from the National Parks Service. The city and the National Parks Service each will spend \$250,000. The play structure is expected to cost about \$480,000 to design and build. The remaining \$20,000 will be used to create a disc golf course along the Parkway.

Councilwoman Donna Jean Boyer said the park improvements are needed.

"They had a nice playground there in the past, it's a great location, especially because of the ball fields nearby and the fact that it's on the Parkway, it's easy to get to, easy to park there," Boyer said. "Over the years, the equipment has been well used and some of it had to be removed because it became



Jessica Stewart | News-Press Now

Construction continues on the new downtown parking garage is almost complete. Some downtown residents and business owners are upset about the price for parking passes.

dangerous."

And more projects could be on the way. A number of plans proposed by a citizens committee could be funded by the next cycle of the Capital Improvement Projects tax. The list consists of 35 projects that total just under \$25 million. A proposal to extend the tax for another five years will be put before the voters in August. The final list of proposed projects will be voted on by the City Council before it is official.

Committee Chair Brad McAnally said the group looked at which projects could benefit the city as a whole and was careful to spend similar amounts in each district of St. Joseph.

"I think we have a very, very good list of projects," McAnally said. "Considering the list that we started with and the list we ended with, the dollar amount and the geographic location of them, I think the taxpayers in the community will love the projects that we picked and will be very happy to support the CIP."

The committee recommended that projects for the St. Joseph Parks, Recreation & Civic Facilities Department and the Public Works Department each take up 29 percent of the total fund and each has been proposed to receive about \$7.1 million.

The committee voted to give the parks department \$2.5 million for a new water feature at Hyde Park, \$1.3 million for renovations to the Horace Mann building and John Lucas Recreation Complex and about \$1 million for upgrades at Krug Park.

The Public Works Department could receive \$4.5 million for street asphaltting, \$1.6 million for sidewalks and \$500,000 for both the airport and urban trails.

The committee voted to give the Public Safety Department \$2.9 million for Fire Station No. 8, \$1.4 million for a ladder truck and \$1 million for the new animal shelter.

Eastowne Business Park could receive \$1.8 million in funding, and City Hall is proposed to get \$1.9 million for windows, lighting and masonry restoration.

American Red Cross

www.crowdrise.com/2018heroes
Address: 401 N. 12th Street, St. Joseph, MO 64501
Phone: (816) 232-8439
Contact: Angie Springs, Executive Director
E-mail: angie.springs@redcross.org

It was 2010, his second year as Buchanan County west district commissioner, when Ron Hook saw how floodwaters ravaged southern Buchanan County.

He also saw how the American Red Cross responded and aided flood victims for 93 days.



Ron Hook and family leading annual Red Cross Heroes Campaign

"It's something I'd never been involved with before," Hook said, as he described the work of the



American Red Cross

American Red Cross of Northwest Missouri, headquartered here.

Every day volunteers delivered two hot meals, hot coffee and water to displaced residents. After floodwaters receded, the Red Cross provided cleaning supplies, coolers and ice — whatever it took to help them clean up their homes.

"They were there with them the whole time," he added.

This year, Hook and his family are leading the annual Red Cross Heroes Campaign, with a goal of raising \$150,000 to aid victims of local disasters.

Sharing the leadership of the campaign are Hook's wife, Robin; son, Ryan; Ryan's wife, Sydni; and their two children, Samuel and Quinn.

"This is one thing the Hook family can do to help pay back," he said.

Hillyard Technical Center

www.hillyardtech.com
Address: 3434 Faraon Street, St. Joseph, MO 64506
Phone: (816) 671-4170
Year established: 1943
Number of employees: 55



HILLYARD
 TECHNICAL CENTER

full-time programs in health sciences and skilled technical science.

With the completion of the Advance Science Research Center, Hillyard will now serve our Gifted and Talented middle school students, TAG Science Investigation and our Agricultural Edition students. The Advance Science Research Center began with three primary goals: 1) Enhancing the teaching of science, technology, engineering and math, 2) Providing a laboratory experience dedicated to academic rigor and 3) Developing workforce readiness for the health-science industries in our community. Hillyard will continue to prepare our students for the workforce of the 21st Century and expose our students to the array of career opportunities available in the field of science, technology, engineering and math.

Hillyard Technical Center was founded in 1943 through the persistent efforts and generous donation of time and wealth by Newton Scott Hillyard. The school was a leader in job training for defense plant workers during World War II and later for retraining veterans for civilian jobs after the war. The technical center relocated to its current \$10-million facility in 1982. Hillyard Technical Center is operated by the St. Joseph School District and serves adult students as well as students from 17 area high schools.

Hillyard Technical Center has post-secondary accreditation through the Council of Occupational Education. Hillyard offers customized training and personal enrichment classes as well as 20

Downtown Library
 927 Felix St.
 232-7729



Carnegie Library
 316 Massachusetts St.
 238-0526

Books ★ Movies ★ Music ★ eBooks ★ eAudiobooks ★ Databases
 Computers ★ WiFi ★ Printing ★ Faxing ★ Scanning
 Meeting Rooms ★ Storytime ★ Programs For All Ages!

Washington Park Library
 1821 N. 3rd St.
 232-2052

Serving the citizens of
 St. Joseph for 128 years.

East Hills Library
 502 N. Woodbine Rd.
 236-2136

75099227



Rolling Hills LIBRARY



*Downloadable eBooks & eAudios
 Baby & Preschool Storytimes
 Zinio Digital Magazines
 Technology Classes
 Friends Bookstore
 Computer Access
 Bookmobile
 Movies, Music
 & More ...*

ALL FREE!

Belt Branch, 1904 N. Belt Savannah Branch, 514 W. Main
 www.rhcl.org 816-232-5479

75099414

Heroes
 for the



American Red Cross



The Hook Family
 2018 Heroes Campaign Chairs

75099230

SPONSORED BY:



<https://www.crowdrise.com/2018heroes>

Nestlé Purina Petcare

www.purina.com

Address: 4502 Packers Ave.,
St. Joseph, MO 64504

Business hours: 24-hour operation

Year established: 1985

Number of employees: 275

Nestlé Purina Petcare is one of the leading manufacturers of pet food in the world. The building that Nestlé Purina Petcare calls home in St. Joseph was originally built in the 1880s as a frozen meat plant and terminal warehouse.

During the course of the next 100 years, the building had several owners, including the Carnation Co. Nestlé purchased the facility in 1982.

In 1985, wet cat food production was under way with the launch of the Fancy Feast brand. Today, the Packers Avenue plant remains one

of only two plants in the United States that produce Fancy Feast.

Nestlé Purina Petcare is headquartered in Vevey, Switzerland, and provides about 275 jobs for residents of St. Joseph and the surrounding communities.

There have been two major expansions at the facility in the past few years. These expansions brought the Beneful Prepared Meals line of dog food exclusively to the facility to be produced in St. Joseph.

We support 18 police and rescue dogs from St. Joseph and the surrounding communities by donating premium dog food products.

Rolling Hills Library

www.rhcl.org

Address: 1904 N. Belt Highway,
St. Joseph, MO 64506

Additional locations: Savannah branch, 514 W. Main Street, Savannah, MO 64485; Administrative office, 1912 N. Belt Highway, St. Joseph, MO 64506

Phone: Belt branch, (816) 232-5479; Savannah branch, (816) 324-4569

Business hours: Belt branch: 9 a.m. to 9 p.m. Mon.-Thurs.; 9 a.m. to 6 p.m., Friday and Sat.; 1 to 5 p.m. Sun.

Savannah branch: 9 a.m. to 6 p.m. Mon., Wed., & Fri.; 9 a.m. to 8 p.m. Tues. & Thurs.; 9 a.m. to 5 p.m. Sat.; 1 to 5 p.m. Sun.

Administrative office: 9 a.m. to 5 p.m. Mon.-Fri.

Year established: 1961

Number of employees: 35

tion to check out, including books, magazines, movies and music,

but also the unusual items of fishing poles, ukuleles, 6ft. folding tables and WiFi hot spots.

Our bookmobile makes monthly visits to communities and schools from Bolckow in northern Andrew County, to Gower on the eastern edge of Buchanan County, and Rushville in southern Buchanan County. We also provide personalized delivery service for adults who reside in senior facilities or anyone who is homebound and can't get to the library easily.

The Friends of the Library operates Books Revisited, a used bookstore at 1908B N. Belt Hwy., in St. Joseph, to raise money to support library programs.



Rupp Funeral Home

Now proudly serving
Clark-Sampson families

www.ruppfuneral.com

Address: 6054 Pryor Ave., St. Joseph,
MO 64504

Phone: (816) 238-1797

E-mail: jlr@ruppfuneral.com

Year established: 1939

Number of employees: 10

Effective December 1, 2017, the Rupp Funeral Home and Clark-Sampson Funeral Home merged our businesses together. The decision to join our funeral homes together seemed to make a lot of sense, as we feel that both funeral homes complement each other in regards to location and because of our strong commitment to customer service. Being family owned and operated lets us keep the personal touch that the families we serve have come to know and deserve. Clark-Sampson was estab-

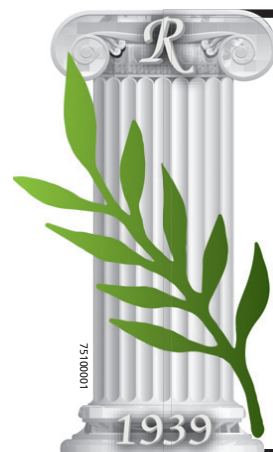


lished in 1908.

We are a full-service funeral home, providing a variety of funeral, cremation and prearrangement services. From an elaborate traditional funeral to the most basic direct cremation, we aid families from every walk of life in creating unique ceremonies that reflect a life well lived.

Our first responsibility as dedicated funeral directors is to the families we serve. We are committed to providing families with courteous, professional service, and respect and dignity, which serve as the hallmark of the funeral industry.

We work for you, and it is our privilege to be of service 24 hours a day, seven days a week, as we are needed.



Rupp Funeral Home

Family Owned & Operated
Serving Our Community Since 1939
Now serving Clark- Sampson Funeral
Home Families

6054 Pryor Avenue, St. Joseph MO
816-238-1797 • www.ruppfuneral.com



HILLYARD

TECHNICAL CENTER
SINCE 1943



ST. JOSEPH
SCHOOL DISTRICT
...educating each child for success



Skilled Technical Sciences

- Agricultural Education
- Automobile Service Technology
- Carpentry
- Collision Repair and Refinish
- Computer Aided Drafting Technology
- Computer Service Technology
- Electronics Technology
- EMT Basic
(Emergency Medical Technician)
- Fire Science
- Health Services
- HVACR (Heating, Ventilation, Air Conditioning and Refrigeration)
- Medical Transcription
- Precision Machine Technology
- Welding Technology

Full Time Adult Programs

- Dental Hygiene
- Diagnostic Medical Sonography
- EMT Paramedic
- Practical Nursing
- Radiography
- Surgical Technology

816.671.4170

3434 Faraon Street, St. Joseph, MO 64506

www.HillyardTech.com



Mission Statement:

"To Prepare Hillyard Technical Center Students for Work Force Success and Continuous Learning"

Day and evening classes available. Call for details.

St. Joseph Public Library

sjpl.lib.mo.us

Address: Downtown Library, 927 Felix St., St. Joseph, MO 64501

Additional locations: East Hills Library, 502 N. Woodbine Road; Carnegie Library, 316 Massachusetts St.; Washington Park Library, 1821 N. Third St.

Business hours: Downtown Library: 9 a.m. to 8 p.m. Mon. thru Thurs.; 9 a.m. to 5 p.m. Fri. and Sat.
East Hills Library: 9 a.m. to 9 p.m.

Mon. thru Thurs.; 9 a.m. to 5 p.m. Fri. and Sat.; 11 a.m. to 3 p.m. Sun.
Carnegie Library: 10 a.m. to 6 p.m. Mon., Wed., Fri.; 11 a.m. to 7 p.m. Tues. and Thurs.

Washington Park Library: 9 a.m. to 5 p.m. Mon., Wed., Fri.; 12 to 8 p.m. Tues. and Thurs.

E-mail: mrevels@sjpl.lib.mo.us

Year established: 1890

Number of employees: 60

The St. Joseph Public Library has four branches offering public-access computers, meeting spaces, voter registration, job-search assistance and online databases.

Our public computers and secure Internet access help St. Joseph residents stay connected.

We issue library cards to borrow books, e-books, e-magazines, audio books, including downloadable audio books, CDs, DVDs, career

guides and large-print books. Local newspapers and magazines are available in print.

Text the library at (816) 249-1377 or chat with a librarian via the website feature, "Ask a Question."



St. Joseph Public Library

Health

2018 Profiles of Progress

Health care sees expansions, kudos in 2018

By NEWS-PRESS NOW

A new Downtown health clinic, the expansion of one agency and a major award for the region's main hospital have marked the beginning of 2018 in St. Joseph.

In February, Northwest Health Services opened a full-service clinic at 503 S. Sixth St. in Downtown St. Joseph.

"Our main mission is to serve those with unmet needs in unmet populations," said Rodney Hummer, director of development for Northwest.

A full-time doctor, nursing and support staff provide counseling, dental and medical care at the facility. There also will be a Medicaid assistance counselor to help those who qualify sign up for coverage.

Hummer said the St. Joe Downtown Health Center project was completed in 29 days with the help of volunteers putting in more than 500 hours. There were lots of late nights for staff, community members and Lehr Construction, he said.

"But they believe in what we do and they saw a need for health care in this Downtown area," Hummer said. We have clinics all over St. Joe, but there was just an area down here that seemed like it had a lot of unmet needs."

One of the biggest challenges for the area is transportation.

"Often times, people can't get to a clinic and they can't even afford a bus pass sometimes," Hummer said. "So being right down here in the hub of where there are a lot of people who have health care needs is good."

Northwest Health Services also saw an expansion to Gower, Missouri, with the acquisition of Gower Family Care Center in recent months. The new site is now known as Gower Family Medicine.

Northwest Health also brought patients from the St. Joseph Family Care Center patients into its Family Medicine Associates clinic on Village Drive as part of the expansion. In addition to several locations in St. Joseph and Gower, the health care provider has services throughout

Northwest Missouri, including Braymer, Cainsville, Hamilton, King City, Chillicothe, Mound City and Savannah.

Also in February, Mosaic Life Care was notified it received the Healthgrades 2018 America's 50 Best Hospitals Award, which carries the distinction of placing it in the top 1 percent of assessed hospitals nationwide.

CONTINUED TO PAGE 17



Mark Laney, CEO of Mosaic Life Care, gives a speech on receiving the Healthgrades 2018 America's 50 Best Hospitals Award in February.

By Daniel Cobb | News-Press Now

Healthgrades is an online resource for comprehensive information on physicians and hospitals. The company assesses more than 4,500 hospitals in the U.S., excluding VA facilities, short-term acute hospitals and rehab hospitals, with patients in the Medicare group making up the core data of its ratings. Healthgrades looks at outcomes across 32 individual specialty areas, including knee replacements, stroke care and heart failure. Along with observing at patient outcomes, Healthgrades also looks at hospitals with lower mortality and complication rates.

Mosaic is the only hospital in the state of Missouri that received the America's 50 Best Hospitals Award.

Mark Laney, CEO of Mosaic, said that receiving this distinction was on par with one of the proudest moments of his professional career, when Mosaic received the Malcolm Baldrige National Quality Award in 2009.

"It's not a popularity contest, it's really about the core work that we do, and it's wonderful to be validated by an external organization to share with the community that this is a place of amazing care and amazing quality," Laney said.

Mosaic Life Care

www.myMosaicLifeCare.org

Address: 5325 Faraon Street,
St. Joseph, MO 64506

Year established: 1984

Number of employees: 4500+

Mosaic Life Care has received the Healthgrades 2018 America's 50 Best Hospitals Award™. The distinction places Mosaic Life Care in the top 1 percent of more than 4,500 hospitals assessed nationwide, for its consistent, year-over-year superior clinical performance. Mosaic Life Care is the only hospital in the state of Missouri that received the America's 50 Best Hospitals Award™.

Other areas of excellence Healthgrades recognized include cardiac, orthopedics, neurosciences, pulmonary, gastrointestinal, critical care and patient safety.

Construction was completed on the downtown German American Building, and over 200 employ-

ees moved into the historic building in May 2017. Additionally, the newly finished downtown parking garage/retail complex now offers more than 36,000 square feet of first-floor retail space and 288 parking spaces.

Mosaic Life Care continues to partner with the community and invests \$1.2 million to fund population health initiatives through the Community Connect program.



News-Press Now file photo

Staff at Northwest Health Services, 503 S. Sixth St., held an open house at their newest clinic in Downtown St. Joseph in February.

Northwest Health Services

www.nwhealth-services.org

Phone: (816) 271-8261

Year Established: 1983

Northwest Health Services provides primary medical, dental, behavioral health and pharmacy services for St. Joseph and surrounding communities. Northwest Health has medical, dental and behavioral health providers spread over 15 counties. Their health centers are local, non-profit, community-owned health care providers.

Northwest Health Services clinics are Federally Qualified Community Health Centers (FQHC's) and improve access to care for Americans regardless of their insurance status. Northwest Health is inspired by the belief that all people—regardless of insurance status—should have access to high quality healthcare.

Additionally, Northwest Health offers a sliding scale program

(Discount Program) for individuals who qualify, as well as payment plans as low as \$5 a month to take every avenue possible to keep health care affordable. The addition of certified application counselors has also helped individuals find affordable options for health insurance.

Northwest Health continually focuses on innovating and improving quality. Recently Northwest Health added a Medication Assisted Treatment (MAT) program to combat the opioid epidemic, opened a new health center in downtown St. Joseph serving anyone, regardless of ability to pay, and expanded access to care with Medicaid and Uninsured services in Clinton County at Gower Family Medicine. They also received the highest award funding for Care Coordination statewide and have won numerous awards for Favorite Physician (Dr. Chris Sandberg, MD) and Favorite Nurse Practitioner (Dr. Sarah Knorr, DNP).

For more information and a list of locations visit nwhealth-services.org.



Industry & Agriculture

2018 Profiles of Progress

Exports fuel business growth in St. Joseph

By NEWS-PRESS NOW

St. Joseph's location in the middle of the country hasn't stopped the city's industries from tapping export markets across the globe.

A recent report shows the city achieved \$1 billion in exports, confirming the third spot in the state, only behind St. Louis and Kansas City. According to a report by Garner Economics, continued growth from local companies fueled export sales that trailed only St. Louis, with \$8.9 million, and Kansas City, with \$6.7 billion.

In a 2017 statement, St. Joseph Chamber of Commerce President Patt Lilly said the figures illustrate the importance of global trade on the local economy.

"As I like to say, St. Joseph is a community that makes things," he said. "In fact, based on the recent data, 18 percent of the community's gross domestic product (GDP) is made up of export products, the highest in our region of the country."

He said that in the last five years, St. Joseph's exports have grown 56 percent.

The export growth comes at a time when some of St. Joseph's leading manufacturing companies have moved forward on expansions. In the last year, Altec Industries, which makes aerial lifts and other specialty equipment, announces an \$80 million project that will include \$44 million in capital investment. The expansion is expected to add up to 105 jobs in three years.

Johnson Controls announced a \$24 million capital investment for an expansion that would add 51 new full-time jobs and would invest a total of \$35.7 million over a year. The company makes and ships automotive batteries in St. Joseph.

Boehringer Ingelheim looks to create 20 jobs with the expansion of its live-stock animal vaccine production facility in St. Joseph. The 13,000-square-foot expansion is part of a combined \$80 million investment at facilities in St.

Joseph and Georgia.

Finally, Triumph Foods is looking to expand its pork plant in St. Joseph.

The pork-processing facility, located at 5302 Stockyards Expressway, announced plans last year for a 12,000-square-foot expansion to be completed by spring of this year.

The project includes robotic palletization technology to increase the speed of outbound shipping and reduce manual handling of finished products. Triumph states the addition also will allow for product storage with its strategic partner, Seaboard Foods, to expand its marketing and selling products to domestic retail and food service customers.

While not all of that growth can be tied to export vs. domestic markets, many of those companies are known to sell products outside the U.S.

In St. Joseph, the recent export growth is more than double the export growth of Springfield, which sits at \$442 million. By comparison, St. Joseph's growth is more than the total exports of Joplin, Jefferson City, Columbia and Cape Girardeau combined.

Statewide, Missouri's top export products last year were transportation equipment, chemicals, food products, machinery, electrical equipment, fabricated metal and agricultural products. Top exports markets for Missouri products were Canada, Mexico, China, Belgium (the gateway to European Union markets) and Japan.

"While the numbers speak well for St. Joseph's economy, it is also why we talk about and support U.S. trade and exports, something that seems the center of much debate in Washington, D.C., these days," Lilly said last year.

A Missouri Department of Economic Development research brief found that export industries in Missouri accounted for 3.1 percent of total employment in the state. Average earnings per worker are 27 percent higher in export dependent jobs than in non-export dependent jobs, according to the report.



File photo

Triumph Foods has announced a 12,000-square-foot expansion to be completed by spring of this year.



File photo News-Press Now

Boehringer Ingelheim is one company in St. Joseph that has seen expansion in recent years.

I&M Machine & Fabrication Corp.

www.imfab.com

Address: 401 S. 3rd St., St. Joseph, MO 64501

Phone: (877) 684-6841 (816) 233-6841 **Fax:** (816) 232-8255

Email: immachine@imfab.com

“WIN” with I&M’s Start-to-Finish Complete Services. The firm is ISO-certified and offers a full range of Metal Fabrication, Machining and Industrial Metal Finishing. Now including their newest service added: Computerized Tube Bending (with the purchase of the new BLM-Elect Tube Bending machine) their tube processing capabilities have “TRIPLED”. They are looking to have the 2nd and 3rd shift production filled this year to make this department a real “WINNER”. Adding it to their current: Q2C & CAD Services, Tube and Plate/Fiber & Co2 Laser Cuttings (w/

10 lasers). Also the other services pictured below... Like the: Welding/Fitting (including robotic), Precision Machining (96” x 288”), Powder Coating (12’ x 12’ x 32”), Blasting (several medias), Assembly/Packaging, Delivery and more.... General Manager, Jon Barron, noted that having a fleet of 10 semi-trailer and box trucks for delivery offers a great advantage in turnaround time. It eliminates shipping damage and is an important part of the companies’ progress.

Starting in his basement with a lathe in 1974, CEO, Tom Leinen built and expanded the business to now serve customers nationwide in such industries as: aerospace, agriculture, automotive, material handling, rail, shipping, signage and many more. Today it operates in 265,000-sq.-ft. of space across several blocks in our very own downtown St. Joseph. Now offering 401k and working towards the 175-employee goal (many of the current with over 10-years of experience and looking to add more experienced personnel). As Mr. Leinen thought about the growth of the company and all the equipment in house he stated, “Our wide range of services makes us one of Northwest’s Largest One-Stop-Shops. We get the work if we have the equipment” He also noted that I&M still has some of its first customers/suppliers and very first employee after 44-years of continuous growth and progress.

“WIN” with I&M’s Start-to-Finish Complete Services



✓ Q2C & CAD Services



✓ Fiber & Co2 Laser Cutting



✓ Fiber & Co2 Tube Lasering



✓ Computerized Tube Bending



✓ Water Jet Cutting



✓ Plasma/Flame Cutting



✓ Machining



✓ Large Machining



✓ Large Fabrication



✓ Welding & Fitting



✓ Assembly



✓ Forming



✓ Punching & Shearing



✓ Stamping



✓ Sawing & more...



✓ Booth & Roller Conveyor Blasting



✓ Large Batch Line PC



✓ Powder Coating



✓ Wet Paint



✓ Quality Control



✓ Packaging & Delivery

I&M’s Tube Processing Capability has “TRIPLED”... Feed our 2nd & 3rd shifts to make it a “WINNER”

A Complete Service

One Stop Shop for your needs with

- ✓ Custom Metal Fabrication
- ✓ Precision Machining
- ✓ Industrial Metal Finishing



SINCE 1974

WWW.
IMFAB
.COM

I&M Machine & Fabrication Corp.

ISO 9001 Certified Facility

401 S. 3rd Street • St. Joseph, MO 64501
PH 816-233-6841 • FAX 816-232-8255

Toll Free: 1-877-684-6841

Quality.
Sustainability.
Stewardship.
Innovation.
Employee Connectivity.

www.triumphfoods.com



5302 Stockyards Expressway, St. Joseph, MO 64504 • (816) 396-2700

Altec

Address: 2106 S. Riverside Road, St. Joseph, MO 64507
Phone: (816) 364-2244

Altec is a leading provider of products and services to the electric utility, telecommunications, tree care, lights and signs, and contractor markets in more than 100 countries throughout the world.

For 85 years, Altec has been committed to excellence. Our products and our people are industry leaders, consistently raising the bar through innovative product design, integrated safety features and dedication to total customer satisfaction.

At Altec, keys to our success are these core values:

People, both customers and as-

sociates, are our greatest strength. We put the customer first. Teamwork makes us strong, and we promote an enjoyable work environment where associates can personally excel while making a difference to our company, our customers and our communities.

We value quality, integrity and financial stability. Through expertise, shared knowledge and innovative solutions, we deliver products that set the standard in effectiveness.

If you are interested in new or used Altec equipment, or if you are interested in joining our team, we want to talk to you.



MATHESON

ask. . . The Gas Professionals™

Industrial, Medical & Specialty Gases
Welding & Safety Supplies

4722 S. Highway 169
 St. Joseph, MO 64507
 816-364-0095

75099846



ASPHALT • PAVING • DRIVEWAYS • STREETS
PARKING LOTS
Over 50 Years In Business

816-232-5406

20798 N. 169 Hwy., Box 8339 • St. Joseph, MO 64508

75099887

Dave's Diesel Service Inc.

Address: 4702 S.E. U.S. Highway 169, St. Joseph, MO 64507
Phone: (816) 232-4542

Business hours: 7 a.m. to 5 p.m. Monday through Friday; 7 a.m. to noon Saturday, by appointment

Year established: 1974

Number of employees: 20

David and Theresa Gach started their diesel repair business in 1974. Dave's Diesel Service Inc. began in a shop next to their home. Less than two years later, they purchased the land that the current building sits on, and they moved in 1976. Since then, the business has continued to grow. With 20 employees and a building triple the original size, the trucks keep rolling in.



The business repairs over-the-road trucks, dump trucks, grain trucks, buses, fire trucks, some agricultural equipment and more.

Dave's Diesel Service Inc. is an authorized dealer for CAT and Cummins engine parts and service as well as a satellite dealer for Freightliner. Dave's stocks a large inventory of parts and can usually have special orders within 24 hours. Our service manager is second to no one. Ben Gach does a tremendous job of running the service department. Dave's expert mechanics can repair just about anything between the headlights and taillights of a truck.

Dave's Diesel Service Inc. would like to thank its loyal customers, as well as its dedicated employees, for the success during the last 43 years, and the owners look forward to many more years of serving the St. Joseph area.



"Taking out the old,
putting in the new since 2006"



KITCHENS



BATHROOMS

VAN CLEAVE
 CONSTRUCTION, REMODELING, & DESIGN
 816.390.7976
 vancleaveconst.com



75099281

I&M Machine & Fabrication Corp.

www.imfab.com

Address: 401 S. 3rd St., St. Joseph, MO 64501 (877) 684-6841

Phone: (816) 233-6841 Fax: (816) 232-8255

Email: immachine@imfab.com

I&M's progress can be seen in its Tube Processing Facility that now houses the newest piece of equipment. Adding to their current service of Tube Laser Cutting is Com-

puterized Tube Bending. In the past, dealing with material variations and poor repeatability was a common issue, however, with the BLM-Elect Tube Bending Machine and special programs (which can be selected by the operator) has guaranteed maximum part repeatability. Even with special tubes (not just round, square or rectangle), with multiple radius bends, these parts repeat to the same accuracy. How great is that!



International Paper

Address: 4725 Easton Road, St. Joseph, MO 64503

Business hours: 8 a.m. to 5 p.m., Monday through Friday

Phone: (816) 364-2341

Year established: 1968

Number of employees: 138

The facility that houses International Paper was built in 1968 as part of the Mead Containers group. In 1987, the facility was purchased by Weyerhaeuser and conducted business under that name for more than 20 years. In 2008, International Paper took ownership and con-

INTERNATIONAL PAPER

tinued production in St. Joseph.

As one of International Paper's top producing facilities, IP employees work extremely hard to earn their reputation as the best work force in the country.

Employees at International Paper are actively involved in the safety, quality and productivity at the facility.



LET US BID YOUR NEXT PROJECT!

SEAMAN & SCHUSKE METAL WORKS CO.

The Oldest Sheet Metal Shop West of the Mississippi Since 1870



TRUST OUR EXPERIENCE

Now Serving ☐ Des Moines ☐ Omaha ☐ Kansas City ☐ All of NWMO

We have been in business since 1870 and enjoy an excellent reputation among our clients as well as our contemporaries. Commitment to our projects, our customers, and delivering the best product possible are the ideals that have built us into a recognized construction leader. The most important components of our business are our customers and their communities, and our pledge to provide a superior quality project.

We employ some of the most skilled tradespeople in the industry. Our combined construction staff has experience in every phase of the industry. Quality craftsmanship and attention to detail go into each and every project.



- ROOFING ■ SHEET METAL
- WELDING ■ HEATING & AC
- STAINLESS STEEL SPECIALTIES

Seaman & Schuske
METAL WORKS CO.

COMMERCIAL & INDUSTRIAL

4th & Mitchell ☐ St. Joseph, MO ☐ 232-3337 ☐ www.seamanschuske.com



LifeLine Foods

2811 S. 11th Street, St. Joseph, MO 64503 | (816) 279-1651 | LifeLine-Foods.com

Jamesport Builders

Address: 32137 State Hwy. 6, Jamesport, MO
Phone: 660-684-6931
Business hours: 8 a.m. to 5 p.m.
 Monday through Friday; Saturday by appointment
Year established: 2011
Number of employees: 40

Victor Graber, the original founder of Jamesport Builders, was a general contractor, building everything from pole barns to houses for 20 years. He and his crew did it all from the concrete to the roof.

He started Jamesport Builders to be an "outdoor store," providing mini barns, yard sheds, guns, gun safes, hunting and fishing equipment, etc. Steve Graber, now a partner, was on Victor's construction crew for 11 years, but had cabinetry experience be-



fore that. Lester Miller is the newest partner as the business continues to grow.

Along with their 40 employees, they build quality post-frame building for commercial hog barns and retail stores, horse barns, machine sheds and residential.

They have six crews led by foreman Lee Kramer, Enos Burkholder, Daniel Miller, Samuel Mast, Larry Schrock and Reuban Bontreger, who does all their concrete work.

Here at Jamesport Builders, we appreciate our customers. Every September at our annual Open House, we give away a free 30x40x10 ft. building. In 2017, Charles Spencer, from Faucett, Missouri, was our lucky winner. The second place winner, Donald Knolker, of Polo, Missouri, received a \$500 gift certificate and third place winner, Jeffery Lammis, of Chula, Missouri, received a \$250 gift certificate. We encourage you to come this year and get to know us. Who knows, you may take home a free building.

Keller Construction Co.

Address: 20798 N. U.S. Highway 169, St. Joseph, MO 64505
Phone: (816) 232-5406
Business hours: 7 a.m. to 4:30 p.m.
 Monday through Friday
Year established: 1950
Number of employees: 10

Keller Construction Co. is a family-owned business that specializes in commercial asphalt paving and repairs. The company has been doing business in St. Joseph for 66 years.

"Our company doesn't do any highway paving, so we can concentrate on the individual customer," says owner Tony Keller. "We treat each job as if we're doing the work for ourselves."

Keller has done everything from filling potholes to total reconstruction

of large parking lots. The company also has contracted to pave several subdivision streets in recent years.

Repairing winter damage to parking lots is a Keller specialty. "There is always a lot of repair work to be done on area parking lots," Keller says. "We will be happy to look at the lot and make suggestions about the best way to repair it."



Johnson Controls

Johnson Controls is a global diversified technology and multi industrial leader, serving a wide range of customers in more than 150 countries.

The future is being built today, and Johnson Controls is making that future more productive, more secure and more sustainable. We create intelligent buildings, efficient energy solutions, integrated infrastructure and next generation transportation systems that work seamlessly together to deliver on the promise of smart cities and communities. At its core, that promise is about delivering innovation that make people's lives – and the world – better.

Our commitment to sustain-

ability dates back to our roots in 1885, with the invention of the first electric room thermostat. We are committed to helping our customers win and creating greater value for all of our stakeholders through strategic focus on our buildings and energy growth platforms.



PROUD OF OUR EMPLOYEES

Proud of our Community!

Johnson Controls

INGENUITY WELCOME

St. Joseph

www.johnsoncontrols.com

LifeLine Foods LLC

www.Lifeline-foods.com

Address: 2811 South 11th Street, St. Joseph, MO 64503

Phone: (816) 279-1651

Year established: 2001

Employees: 125

LifeLine Foods LLC is owned by more than 600 area farmers and purchases 25 million bushels of corn each year from producers across the region. LifeLine processes

corn to make a variety of high-quality ingredients used globally in everything from beer to corn muffins to tortilla chips.

LifeLine will open a new specialty mill later this year to meet customer demand for innovative and healthy products.

At LifeLine, we encourage our employees and customers to imagine what corn can do!



Matheson Gas

Address: 4722 S.E. U.S. Highway 169, St. Joseph, MO 64507

Phone: (816) 364-0095

Matheson is a single source for industrial, welding, medical and specialty gases, as well as a full line of gas handling, welding and safety equipment.

Including our gas plants, research facilities, supply depots and retail stores, Matheson has more than 300 sites in the United States. We work hard to hold onto our local values, with personalized service and a real interest in understanding — and resolving — your gas use and management requirements.

Throughout our 85-plus years

of serving customers, Matheson always has placed a premium value on the relationship we build and maintain with every one of our customers.



Matheson Gas



ENGINEERING ■ SURVEYING ■ PLANNING ■ DESIGN

MUNICIPAL
ENGINEERING

TRANSPORTATION

LAND
DEVELOPMENT

WATER

PUBLIC
SPACES

STRUCTURAL

INSPIRED BY CHALLENGES PREPARED FOR MORE

SNYDER-ASSOCIATES.COM

75099229

Seaman and Schuske

www.seamanschuske.com

Address: 1215 S. Fourth St.,
St. Joseph, MO 64501

Phone: (816) 232-3337

Business hours: 7:30 a.m. to 4:30 p.m.,
Monday through Friday

Year established: 1870

Number of employees: 40

"Throughout the years, lush or lean, we've taken the hurdles together." This was the byline in 1943, written in an ad by Seaman & Schuske in the News-Press, celebrating the 100th anniversary of the founding of the city of St. Joseph. That mantra still rings true in 2018, when Seaman & Schuske is celebrating its 103rd year as a member of the St. Joseph Chamber of Commerce and its 148th year in business.

Seaman & Schuske employs 30 to 45 quality craftsman a year and that is what has contributed to its longevity. Its employees are the lifeblood of the company, and the



quality of the work they produce is what keeps the customers coming back.

We offer custom industrial, HVAC and architectural fabrication and installation from a variety of metals, as well as laser cutting and custom welding. Also, in addition to the metal, we do commercial flat, tapered and built-up roofing.

Snyder & Associates

Address: 802 Francis Street,
St. Joseph, MO 64501

Additional locations: Maryville, Missouri; Ankeny, Des Moines, Atlantic, Center Rapids and Council Bluffs, Iowa; Madison, Wisconsin; Sioux Falls, South Dakota; Omaha, Nebraska.

Phone: (816) 364-5222

E-mail: aemacias@snyder-associates.com

Year established: 1977

Number of employees: 200

Snyder & Associates is a full-service Civil Engineering firm providing design and construction engineering services to cities, counties and private developers. Snyder & Associates begins its 16th year in St. Joseph and

Maryville, and is proud to list the following planning and design

accomplishments for 2017. These projects have both economic and quality of life improvements for northwest Missouri.

Projects for 2017 include the civil and structural design for the two new fire stations currently under construction for the City of St. Joseph, and completion of a new bridge for Buchanan County southeast of Rushville, Missouri. We also worked with area firms in the design and construction of the new parking garage, including the new conveyance system, which routes storm water around the new parking garage. We are currently finalizing construction administration services for a water plant in Gallatin, Missouri, and a sewer plant in Bethany, Missouri.

Exciting new projects for 2018, to name a few, include finalizing construction administration work for the Blacksnake Sewer Project and numerous bridge projects in Buchanan, Andrew, Harrison, Daviess and Nodaway counties.



Local discounts on the go!

• Dining • Entertainment • Auto
• Services • Giveaways • More!

Download the app now!



Search for News-Press Now Press Club
in the iTunes store or in Google Play

Questions about the Press Club app?
Want to add your business' discount free?
Contact us at (816) 271-8600 or
customerservice@newspressnow.com



Altec is a leading supplier of products and services to the following markets around the world:

- Electric utilities
- Telecommunications
- Tree care
- Lights & signs
- Construction

Our success over the last 85 years is based on putting people first - our customers and our employees, and on PRODUCING INNOVATIVE, TOP-QUALITY PRODUCTS that get the job done safely and effectively.



**2106 S. Riverside Rd.,
St. Joseph, MO
816-364-2244
www.altec.com**

An authorized dealer of

CAT **Cummins**

Dave's Diesel

Service, Inc

Parts & Service 232-4542

1 Block East of I-29 on S. Hwy. 169
(4702 SE US Hwy. 169)
Mon.-Fri. 7:00 am-5pm, Sat. By Appt.

Triumph Foods

www.triumphfoods.com

Address: 5302 Stockyards Expressway, St. Joseph, MO 64504

Phone: (816) 396-2700

Business hours: 8 a.m. to 5 p.m., Monday-Friday

Year established: 2006

Number of employees: Approximately 2,900

Triumph Foods, a producer-owned pork processor, headquartered in St. Joseph, began operation of its state-of-the-art processing facility in January 2006. The company has continued to invest in the community and now employs nearly 2,900 people.

Triumph Foods takes pride in producing the highest-quality pork product in the industry, and our success is evident as we continue to increase sales and expand our presence in the global market.

Today, the company is an industry leader in the export of pork



products, with approximately 30 percent of the products produced in St. Joseph finding their way to export customers. Triumph Foods is the second largest pork processing facility in the United States, generating more than \$1.6 billion in revenue.

At Triumph Foods, we pride ourselves in focusing on our commitments of quality, stewardship, sustainability, innovation and employee connectivity. Triumph Foods job opportunities are NOW ONLINE! To apply online, please visit triumphfoods.com/ca-reers-main.

Van Cleave Construction, Remodeling & Design

www.vancleaveconst.com

Address: 4209 Cook Rd, St. Joseph, MO 64505

Phone: (816) 390-7976

Number of employees: 13

In 2006, Erich Van Cleave had a clear vision of what a remodeling business should be, as well as the ambition and determination to start a company capable of meeting that standard. With nothing more than a truck and some tools, he started out on a path that would create the foundation for Van Cleave Construction, Remodeling & Design.

The team at Van Cleave Construction, Remodeling & Design is dedicated to quality and professionalism and in doing so, the company has created a loyal customer base with many customers returning for additional services.



Van Cleave Construction, Remodeling & Design offers interior and exterior remodeling and design services. In 2016 a design center was opened at 4209 Cook Road, in St. Joseph, to better serve clients in selecting products for their project. Their process for taking a project from design to completion is what has made them an industry leader in our area.

It is this level of customer service, quality and professionalism that has made Van Cleave Construction, Remodeling & Design St. Joseph's favorite remodeling company.

Celebrating 78 years

as part of the St. Joseph community

Robert J. Brown
Lumber Co.

801 S. 5th Street | St. Joseph, MO 64501 816-232-6752

75099914

The Battery Man

Service & Installation
(Starters, Alternators, Generators, Batteries)

Light Automotive Work
Open Monday - Saturday

1729 Commercial St.
816-279-2172

75099959



JAMESPORT BUILDERS

660-684-6931 • Post Frame Buildings

Machine Sheds - Horse Barns - Garages

We also do Metal Roofs, Spray Foam Insulation (close cell or open cell) & Cellulose Insulation.

We Have House Plans, Dirt Work & Concrete Available

Hrs: Mon-Fri 8 am - 5 pm | Sat. by Appointment Only

32137 State Hwy 6 • Jamesport, MO 64648



75083668

Growing to contain your needs.

■
Corrugated & Bulk Boxes

■
Packaging Boxes

■
Packing Trays

INTERNATIONAL  PAPER

4725 Easton Rd., St. Joseph, MO
816-364-2341 | www.ipaper.com



Making the Most of Our Planet's Resources.

NORTHWEST + HEALTH

SERVICES



MEDICAL



DENTAL



COUNSELING

COMPREHENSIVE CARE

At Northwest Health Services we take pride in offering high-quality primary care that impacts the total health of our patients, including medical, dental, behavioral health, counseling, Veterans Choice Program, pharmacy services and **340B** medication discount.

COMMUNITY FOCUSED

Our providers are involved in the communities they serve and have a passion for meeting the needs of their patients.

AWARD WINNING

Northwest Health Services received the highest award funding for Care Coordination statewide and have won numerous awards for Favorite Physician (Dr. Chris Sandberg, MD) and Favorite Nurse Practitioner (Dr. Sarah Knorr, DNP). NHS provides cutting-edge care through services such as patient portal, telehealth, digital x-ray and more.



(816) 271-8261

www.nwhealth-services.org

